

PT2150-51ST-V2Q4



Product Specification

Touch	Resistivo
Feature	-
Performance	-
Inch	15,0"
Form Factor	4:3
Display	LCD
Resolution	1024 x 768
Colors	16bit
LCD view angles (T/B/L/R)	-
Brightness	350cd/m2
Backlight	LED
Display life	50000h
CPU	RISC ARM9 300MHz
RAM	64MB
Storage	64MB
Battery backup Memory	1MB
RTC	Built in
SD card	-
Ethernet	1x 10/100Mb/s
USB Host	USB Type A
Programming port	USB Type B
COM 1	RS232

COM 2	RS422/485
COM 3	RS485
COM 4	RS485
COM 5	RS485
Power Supply	24Vdc \pm 10% (isolated)
Power Consumption	20W
Storage Temperature	-10 ~ 60°C
Operating Temperature	-10 ~ 60°C
Relative Humidity	10 - 90%RH (non-condensate)
Vibration	Random vibration 1Grms (5 ~ 500Hz)
Protection Degree (Front)	IP66
Protection Degree (Back)	IP20
Lightning	-
Case Material	ABS
Mounting	Panel-Mount
Cutout	384,5 x 283mm
Dimension	399,1 x 297,6 x 57,5mm
Weight	3000g
CE	EN61000-6-2, EN61000-6-4
RoHS	Compliant
UL	Optional



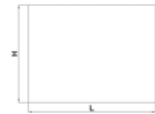


PT2 series HMI panels / PT2 系列人机介面 / PT2 系列人机界面

Outlet dimension / 外觀尺寸 / 外观尺寸



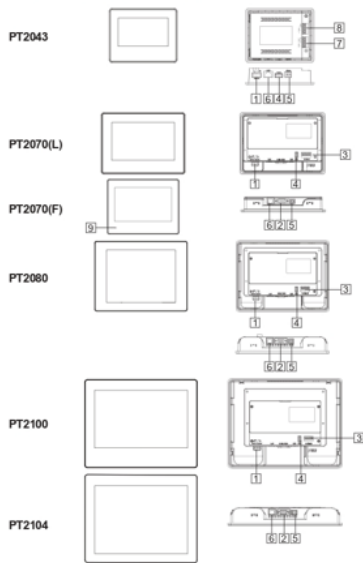
Cut out dimension / 開孔尺寸 / 开孔尺寸



Model	A	B	C*	L	H
PT2043	128mm5.08"	103mm4.06"	33mm1.30"	118.5mm4.67"	92.5mm3.64"
PT2070(F)	189.6mm7.46"	144.9mm5.70"	36.1mm1.42"	175mm6.89"	132.5mm5.22"
PT2070(L)	203.8mm8.02"	148.8mm5.90"	37.1mm1.46"	191.5mm7.54"	130mm5.43"
PT2080	231.6mm9.12"	176.3mm6.94"	43.4mm1.70"	221mm8.70"	163.5mm6.44"
PT2100 / PT2104	270.1mm10.63"	212.1mm8.35"	43.4mm1.71"	259mm10.2"	201mm7.91"
PT2120 / PT2121	335.4mm13.20"	245.8mm9.68"	66.4mm2.61"	302mm11.89"	229mm8.98"
PT2150	398.1mm15.71"	297.8mm11.72"	63.4mm2.50"	364.5mm14.34"	283mm11.14"

* Includes 5-Pin terminal block height / 產品高度包含5Pin端子 / 产品高度包含5Pin端子

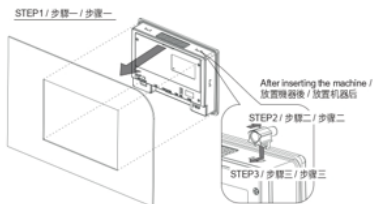
Function view / 功能配置圖 / 功能配置圖



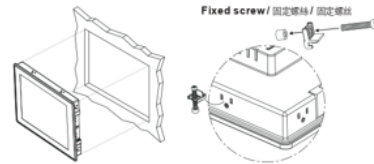
3

Installation drawing for locks / 固定件安裝示意圖 / 鎖具安裝示意圖

Plastic locks / 塑膠安裝固定件 / 塑料安裝鎖具

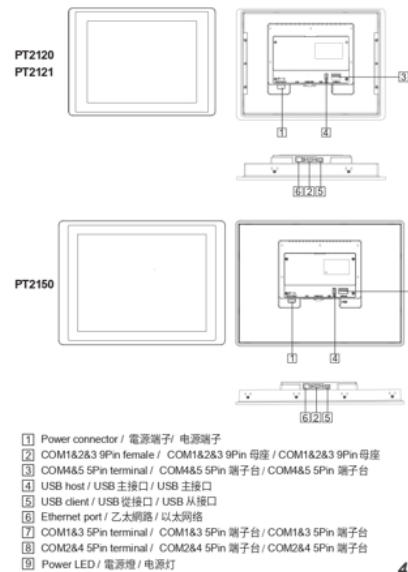


Metal locks / 金屬安裝固定件 / 金屬安裝鎖具



Tighten each fixing screw until the bezel corner gets in contact with the panel.
使用固定螺絲時請注意不要鎖太緊，以免壓到造成其他損傷。
使用固定螺絲時請注意不要鎖太緊，以免壓到造成其他損傷。
Suggested torque for fixing screws: 0.25-0.34Nm / 固定螺絲扭力建議值: 0.25-0.34Nm

2



4