

PT2150-51ST-V2Q1



Product Specification

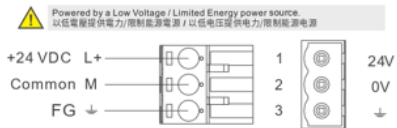
Touch	Resistivo
Feature	-
Performance	-
Inch	15,0"
Form Factor	4:3
Display	LCD
Resolution	1024 x 768
Colors	16bit
LCD view angles (T/B/L/R)	-
Brightness	350cd/m2
Backlight	LED
Display life	50000h
CPU	RISC ARM9 300MHz
RAM	64MB
Storage	64MB
Battery backup Memory	128KB
RTC	Built in
SD card	-
Ethernet	1x 10/100Mb/s
USB Host	USB Type A
Programming port	USB Type B
COM 1	RS232

COM 2	RS422/485
COM 3	RS485
COM 4	RS485
COM 5	RS485
Power Supply	24Vdc \pm 10% (isolated)
Power Consumption	20W
Storage Temperature	-10 ~ 60°C
Operating Temperature	-10 ~ 60°C
Relative Humidity	10 - 90%RH (non-condensate)
Vibration	Random vibration 1Grms (5 ~ 500Hz)
Protection Degree (Front)	IP66
Protection Degree (Back)	IP20
Lightning	-
Case Material	ABS
Mounting	Panel-Mount
Cutout	384,5 x 283mm
Dimension	399,1 x 297,6 x 57,5mm
Weight	3000g
CE	EN61000-6-2, EN61000-6-4
RoHS	Compliant
UL	Optional





Power supply / 電源供應 / 電源供應



- Do not open the rear cover of the panel when power is applied.
- Be sure that the power supply has enough power capacity for the operation of the equipment.
- PT2043: 24VDC / 0.4A
- PT2070(F) & PT2070(L) & PT2080 & PT2100 & PT2104 & PT2120 & PT2121 & PT2150: 24VDC / 0.8A

Dispose of batteries / 電池處理 / 電池處理



- Dispose of batteries according to local regulations.

Pin diagram / 腳位圖 / 腳位圖

Model	Terminal	Description	Pin	Description
PT2043	21S / 5Pin terminal / 5Pin端子台	COM1 & COM3	1	RS422 TXD+ / RS485+ (COM2)
	31S / 5Pin terminal / 5Pin端子台	COM2	2	RS232 RXD (COM1)
	41S / 5Pin terminal / 5Pin端子台	COM2 & COM4	3	RS232 TXD (COM1)
	51S / 5Pin terminal / 5Pin端子台	COM4 & COM5	4	RS422 RXD (COM2)
PT2070(F) & PT2070(L) & PT2080 & PT2100 & PT2104 & PT2120 & PT2121 & PT2150	21S / 5Pin terminal / 5Pin端子台	COM1 & COM2 & COM3	1	RS422 TXD+ / RS485+ (COM2)
	31S / 5Pin terminal / 5Pin端子台	COM2	2	RS232 RXD (COM1)
	41S / 5Pin terminal / 5Pin端子台	COM2 & COM4	3	RS232 TXD (COM1)
	51S / 5Pin terminal / 5Pin端子台	COM4 & COM5	4	RS422 RXD (COM2)
PT2043	21Q / 5Pin terminal / 5Pin端子台	COM1 & COM2 & COM3	1	RS485+ (COM2)
	31Q / 5Pin terminal / 5Pin端子台	COM2	2	RS232 RXD (COM1)
	41Q / 5Pin terminal / 5Pin端子台	COM2 & COM4	3	RS232 TXD (COM1)
	51Q / 5Pin terminal / 5Pin端子台	COM4 & COM5	4	RS422 RXD (COM2)

Battery replacement installation / 替代電池安裝說明 / 替代電池安裝說明

Please scan QR Code to download the installation guide. / 請掃描QR Code下載說明文件 / 請掃描QR Code下載說明文件

- Note: It will affect the product warranty. If open the rear cover and damage the "Void if torn" Warranty label. Please contact us for details.
- *注意: 若於產品保固期間內自行開啟後蓋造成「撕毀保固無效」貼紙損毀將會影響產品保固。
- *注意: 若於產品保固期間內自行開啟後蓋造成「撕毀保固無效」貼紙損毀將會影響產品保固。



<https://reurl.cc/9WZqM>

The products have been designed for use in an industrial environment in compliance with the 2014/30/EU directive. / 本產品適用於工業環境並符合2014/30/EU標準 / 本產品適用於工業環境並符合2014/30/EU標準

- The products have been designed in compliance with: / 本產品符合以下標準: / 本產品符合以下標準:
- EN IEC 61000-6-4: 2019 / EN IEC 61000-6-2: 2019
- BS EN IEC 61000-6-4: 2019 / BS EN IEC 61000-6-2: 2019
- EN 61000-3-2: 2014 / IEC 61000-3-2: 2014
- BS EN 61000-3-2: 2014 / IEC 61000-3-2: 2014
- EN 61000-3-3: 2013 / IEC 61000-3-3: 2013
- BS EN 61000-3-3: 2013 / IEC 61000-3-3: 2013
- EN IEC 61000-6-2: 2019 / IEC 61000-6-2: 2019
- BS EN IEC 61000-6-2: 2019 / IEC 61000-6-2: 2019

The installation of these devices into residential, commercial and light-industrial environments is allowed only special measures are taken in order to get the conformity to IEC-61000-6-3 / 本產品若安裝於住宅、商業及輕工業的環境時，必須加裝特殊措施以符合IEC-61000-6-3 / 本產品若安裝於住宅、商業及輕工業的環境時，必須加裝特殊措施以符合IEC-61000-6-3

NEMA Certification: NEMA Type 4X Indoor Use Only

Reproduction of the contents of this copyrighted document, in whole or part without written permission of Ceramate Technologies Inc. is prohibited. / 本文件內容僅為Ceramate Technologies Inc.所有，未經本公司同意，請勿自行複製、拷貝或重印文件內容。 / 本文件內容僅為Ceramate Technologies Inc.所有，未經本公司同意，請勿自行複製、拷貝或重印文件內容。

CAUTION

- Indoor use and pollution degree II, it must be wiped with a dry cloth for cleaning up the labeling.
- Please be used qualified power supply by SELV or double insulation of UL60950 or UL61010-1 or UL61010-2-201 standards.
- UL61010-2-201: Shall be mounted in the Industrial Control Panel, and the ambient temperature does not exceed 60 degrees C.
- If the equipment is used in a manner not specified by the manufacturer, the protection provided by the equipment may be impaired.
- We suggest using the cable type - AWG (American Wire Gauge) 18-24 and the corresponding pin type cable terminals.
- We suggest used torque value 4.60 lb-in, do not use excessive force when fixing wiring.
- Altitude: up to 2000 m
- Maximum ambient temperature rated: PT2043, PT2070, PT2080, PT2100, PT2104: 60 degree C / PT2120, PT2121, PT2150: 70 degree C
- Minimum ambient temperature rated - 10 degree C
- Input Wiring Rating: Min. 90 degree C

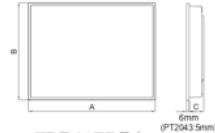
ATTENTION

- En cas d'utilisation dans un intérieur soumis à une pollution degré II, l'équipement doit être nettoyé à l'aide d'un tissu sec.
- L'alimentation utilisée doit respecter la norme SELV ou avoir une double isolation de type UL60950, UL61010-1 ou UL61010-2-201.
- UL61010-2-201: Doit être monté dans une armoire industrielle dont la température ambiante ne dépasse pas 60 degrés Celsius.
- En cas d'utilisation non conforme ou non spécifiée par le fabricant, la protection de l'équipement peut être inadéquate.
- Nous suggérons d'utiliser un type de câble AWG (American Wire Gauge) 18-24 avec les bornes correspondantes.
- Le couple de serrage recommandé pour les vis des bornes est de 4.60 lb-in, ne pas utiliser une force excessive.
- Altitude: jusqu'à 2000 m
- Température ambiante maximale évaluée: PT2043, PT2070, PT2080, PT2100, PT2104, PT2104: 60 degree C / PT2120, PT2121, PT2150: 70 degree C
- Température ambiante minimale nominale - 10 degree C
- Puissance du câblage d'entrée: min. 90 degrés C

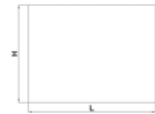
Ceramate Technologies Inc.
7F-1, No. 168, Luancheng Rd, Zhonghe Dist.,
New Taipei City 235, Taiwan (R.O.C.)

PT2 series HMI panels / PT2 系列人机介面 / PT2 系列人机界面

Outlet dimension / 外觀尺寸 / 外观尺寸



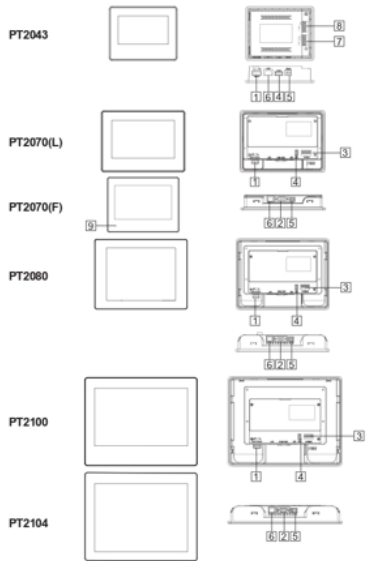
Cut out dimension / 開孔尺寸 / 开孔尺寸



Model	A	B	C*	L	H
PT2043	128mm5.08"	103mm4.06"	33mm1.30"	118.5mm4.67"	92.5mm3.64"
PT2070(F)	189.6mm7.46"	144.9mm5.70"	36.1mm1.42"	175mm6.89"	132.5mm5.22"
PT2070(L)	203.8mm8.02"	148.8mm5.90"	37.1mm1.46"	191.5mm7.54"	130mm5.43"
PT2080	231.6mm9.12"	176.3mm6.94"	43.4mm1.70"	221mm8.70"	163.5mm6.44"
PT2100 / PT2104	270.1mm10.63"	212.1mm8.35"	43.4mm1.71"	259mm10.2"	201mm7.91"
PT2120 / PT2121	335.4mm13.20"	245.8mm9.68"	66.4mm2.61"	302mm11.89"	229mm8.98"
PT2150	398.1mm15.71"	297.8mm11.72"	63.4mm2.50"	364.5mm14.34"	283mm11.14"

* Includes 5-Pin terminal block height / 產品高度包含5Pin端子 / 产品高度包含5Pin端子

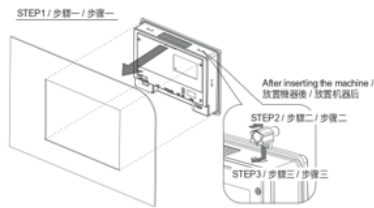
Function view / 功能配置圖 / 功能配置圖



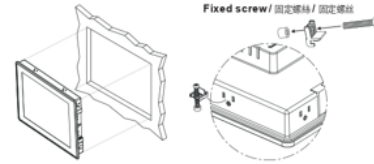
3

Installation drawing for locks / 固定件安裝示意圖 / 鎖具安裝示意圖

Plastic locks / 塑膠安裝固定件 / 塑料安裝鎖具

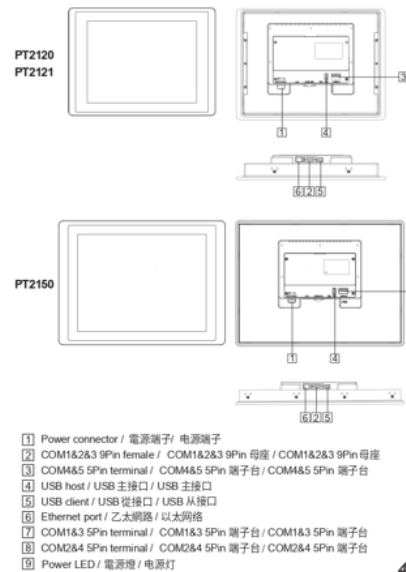


Metal locks / 金屬安裝固定件 / 金屬安裝鎖具



Tighten each fixing screw until the bezel corner gets in contact with the panel.
使用固定螺絲時請注意不要鎖太緊，以免壓到造成其他損傷。
使用固定螺絲時請注意不要鎖太緊，以免壓到造成其他損傷。
Suggested torque for fixing screws: 0.25-0.34Nm / 固定螺絲扭力建議值: 0.25-0.34Nm

2



4