

# FE9156M

---



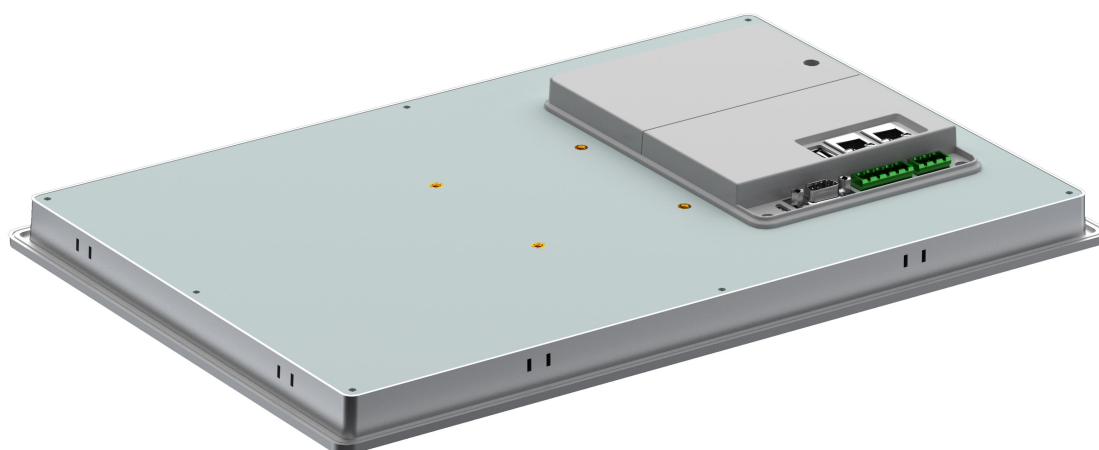
# Product Specification

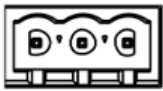
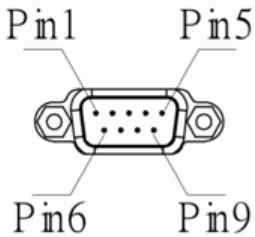
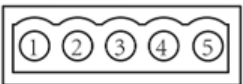

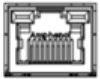
---

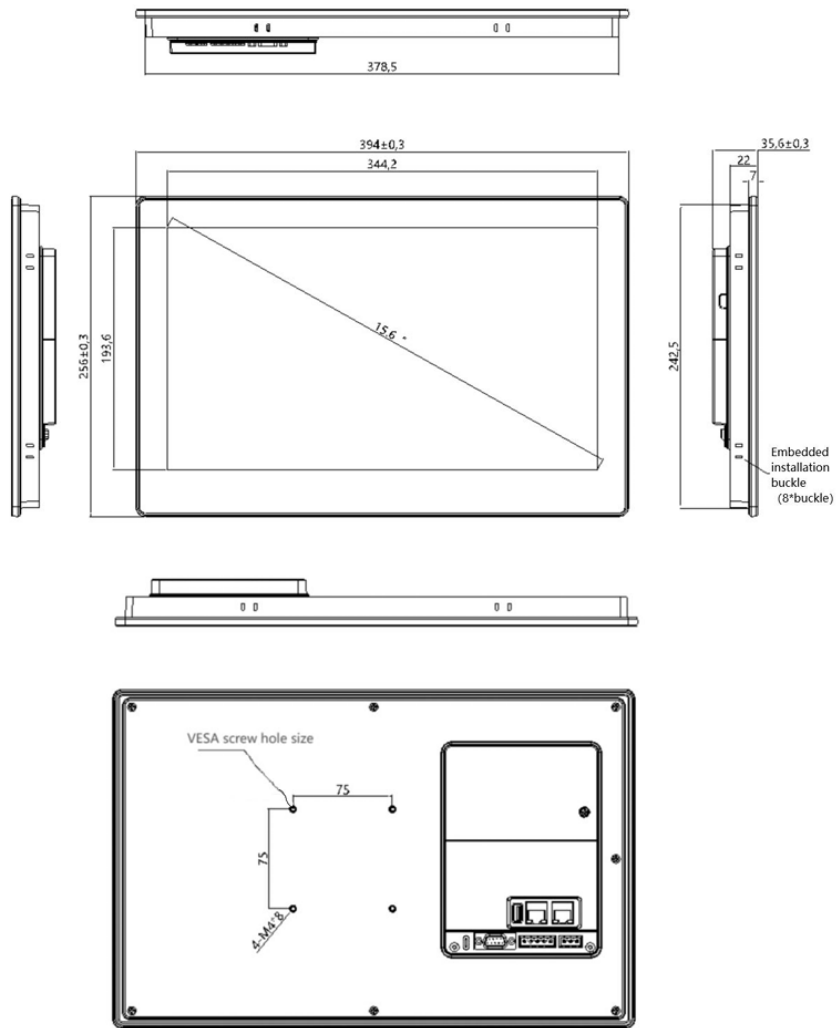
<b>Touch</b>	Resistivo
<b>Feature</b>	CloudHMI
<b>Performance</b>	High
<b>Inch</b>	15,6"
<b>Form Factor</b>	16:9
<b>Display</b>	LCD
<b>Resolution</b>	1920 x 1080
<b>Colors</b>	16bit
<b>LCD view angles (T/B/L/R)</b>	85'/85'/85'/85'
<b>Brightness</b>	250cd/m2
<b>Backlight</b>	LED
<b>Display life</b>	50000h
<b>CPU</b>	ARM Cortex-A53 - 1.2GHz
<b>RAM</b>	1GB
<b>Storage</b>	8GB
<b>Battery backup Memory</b>	Stored in storage
<b>RTC</b>	Built in
<b>SD card</b>	-
<b>Ethernet</b>	2x 10/100Mb
<b>USB Host</b>	USB Type A
<b>Programming port</b>	USB Type C

<b>COM 1</b>	RS232/422/485
<b>COM 2</b>	RS422/485
<b>COM 3</b>	RS232
<b>COM 4</b>	-
<b>COM 5</b>	-
<b>Power Supply</b>	18 - 28 Vdc
<b>Power Consumption</b>	< 18 W
<b>Storage Temperature</b>	-20 ~ 60 °C
<b>Operating Temperature</b>	0 ~ 50 °C
<b>Relative Humidity</b>	10 - 90%RH (non-condensate)
<b>Vibration</b>	10 - 25Hz (x-y-z 2G/30min)
<b>Protection Degree (Front)</b>	IP65
<b>Protection Degree (Back)</b>	IP20
<b>Lightning</b>	Lightening &Surging ±1KV, Group Pulse ±2KV, Static Contact: 4KV, Air Discharge: 8KV
<b>Case Material</b>	Aluminium
<b>Mounting</b>	Panel-mount, VESA (75 x 75mm)
<b>Cutout</b>	380 x 245mm
<b>Dimension</b>	394 x 256 x 36mm
<b>Weight</b>	2250g
<b>CE</b>	EN61000-6-2:2005, EN61000-6-4:2007
<b>RoHS</b>	Compliant
<b>UL</b>	-





Power Terminals (Pin1~2 from left to Right)		
	Pin 1	FG
	Pin 2	0V
	Pin 3	24 V DC
DB9 Serial Port Terminals		
	Pin 1	Rx-(B) (COM1 RS422/RS485-)
	Pin 2	RxD (COM1 RS232)
	Pin 3	TxD (COM1 RS232)
	Pin 4	Tx- (COM1 RS422)
	Pin 5	GND
	Pin 6	Rx+(A) (COM1 RS422/RS485+)
	Pin 7	RxD (COM3 RS232)
	Pin 8	TxD (COM3 RS232)
	Pin 9	Tx+ (COM1 RS422)
COM2 terminal (Pin1~5 from left to Right)		
	Pin 1	Rx+(A)
	Pin 2	Rx-(B)
	Pin 3	GND
	Pin 4	Tx+
	Pin 5	Tx-
USB Host		
	USB Type C	Salve: Used for downloading programs and debugging
		Master: Used for connecting U-disc and bar code scanner etc.
Ethernet Ports		
	RJ45	Used for setting Ethernet with controllers or used for connecting server.



Flush-mounted installation cutout dimensions:380mm\*245mm