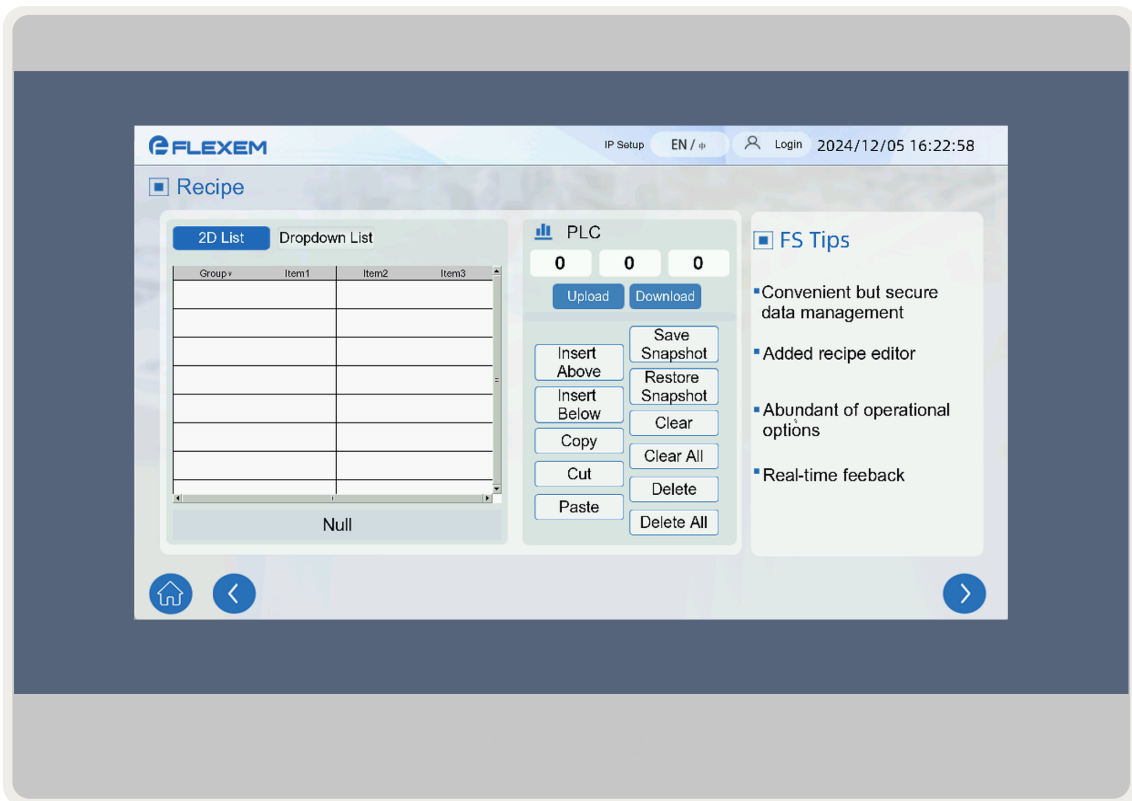


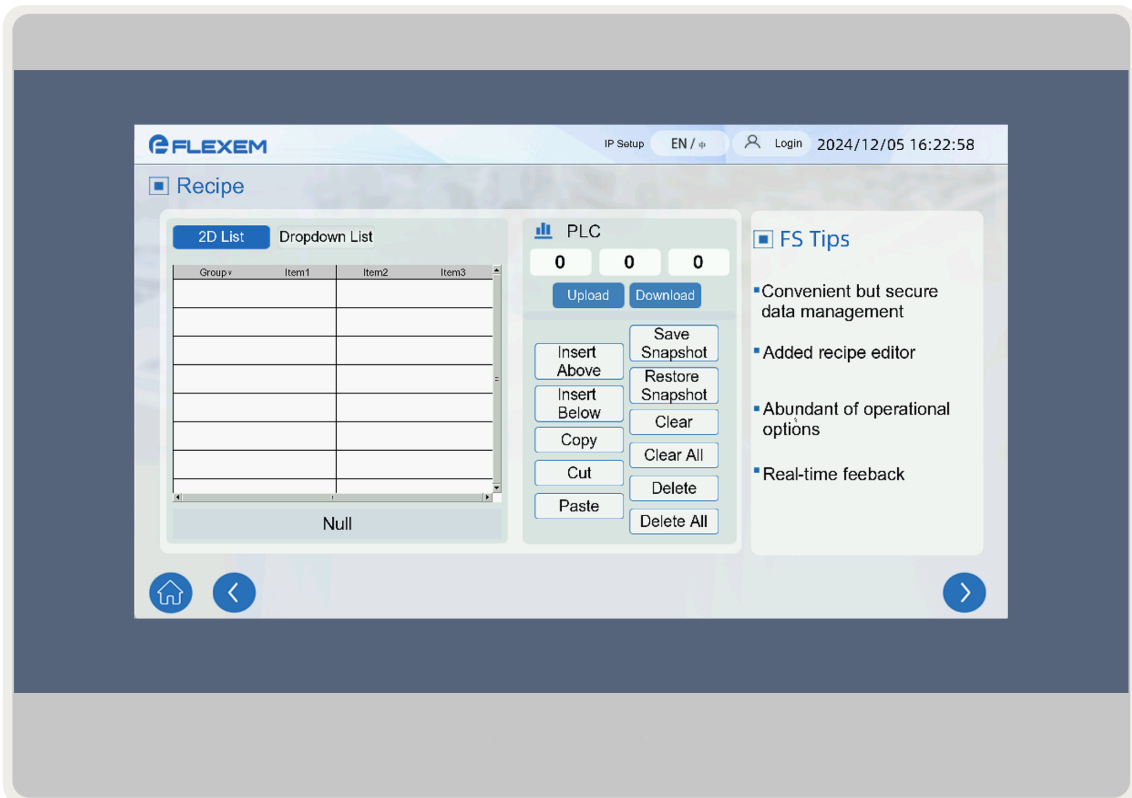
FE6370WE

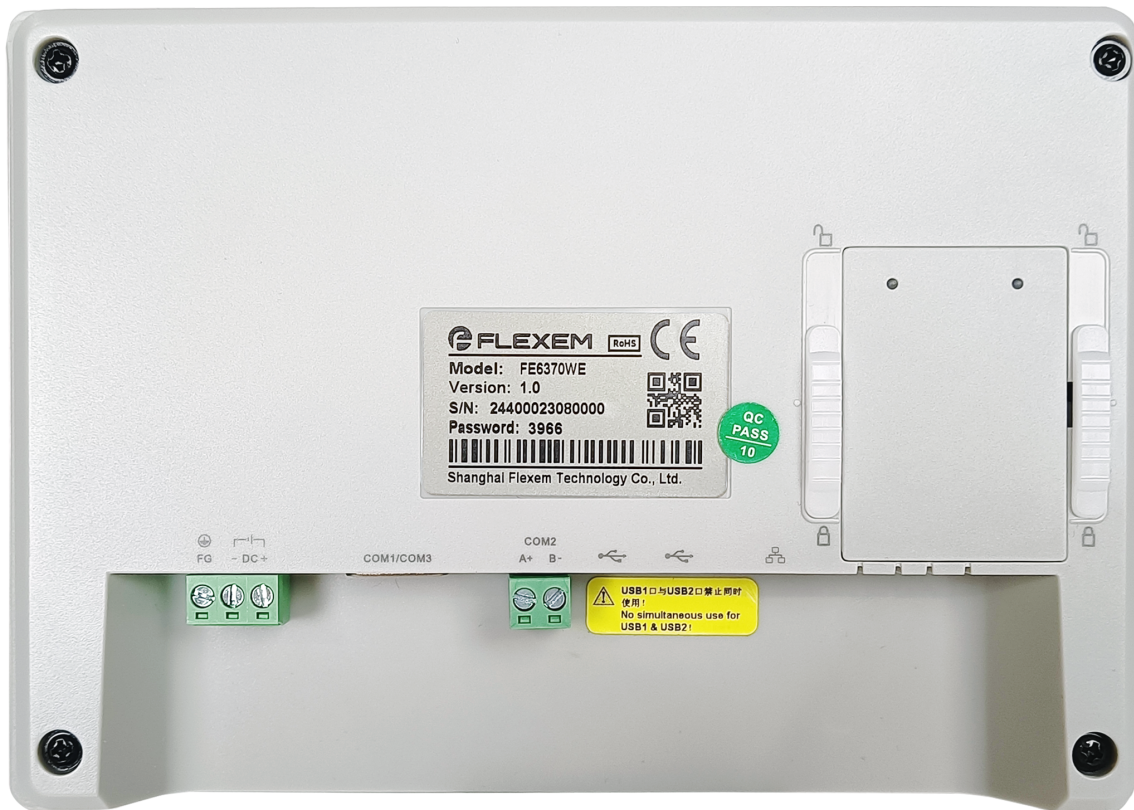


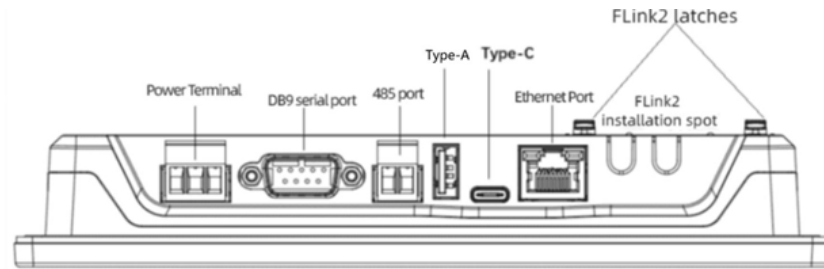
Product Specification

Touch	Resistivo
Feature	CloudHMI
Performance	-
Inch	7,0"
Form Factor	16:9
Display	LCD
Resolution	1024 x 600
Colors	24bit
LCD view angles (T/B/L/R)	85'/85'/85'/85'
Brightness	350cd/m2
Backlight	LED
Display life	50000h
CPU	ARM Cortex-A7 - 1GHz
RAM	256MB
Storage	4GB
Battery backup Memory	Stored in storage
RTC	Built in
SD card	-
Ethernet	1x 10/100Mb/s
USB Host	USB Type A
Programming port	USB Type C

COM 1	RS232/422/485
COM 2	RS485
COM 3	RS232
COM 4	-
COM 5	-
Power Supply	9 - 28 Vdc
Power Consumption	< 10W
Storage Temperature	-20 ~ 60 °C
Operating Temperature	0 ~ 50 °C
Relative Humidity	10 - 90%RH (non-condensate)
Vibration	10 - 25Hz (x-y-z 2G/30min)
Protection Degree (Front)	IP65
Protection Degree (Back)	IP20
Lightning	Lightening &Surging ±1KV, Group Pulse ±2KV, Static Contact: 4KV, Air Discharge: 8KV
Case Material	ABS
Mounting	Panel-Mount
Cutout	190 × 136mm
Dimension	204 × 145 × 36,6mm
Weight	476g
CE	EN61000-6-2:2005, EN61000-6-4:2007
RoHS	Compliant
UL	Optional





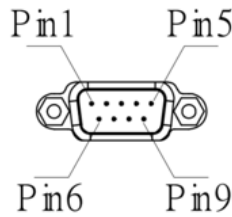


Power Terminals (Pin1~2 from left to Right)



Pin 1	FG
Pin 2	0V
Pin 3	24 V DC

DB9 Serial Port Terminals



Pin 1	Rx-(B) (COM1 RS422/RS485-)
Pin 2	RxD (COM1 RS232)
Pin 3	TxD (COM1 RS232)
Pin 4	Tx- (COM1 RS422)
Pin 5	GND
Pin 6	Rx+(A) (COM1 RS422/RS485+)
Pin 7	RxD (COM3 RS232)
Pin 8	TxD (COM3 RS232)
Pin 9	Tx+ (COM1 RS422)

485 terminal (Pin1~2 from left to Right)



Pin 1	A+ (COM2 RS485)
Pin 2	B- (COM2 RS485)

USB Host

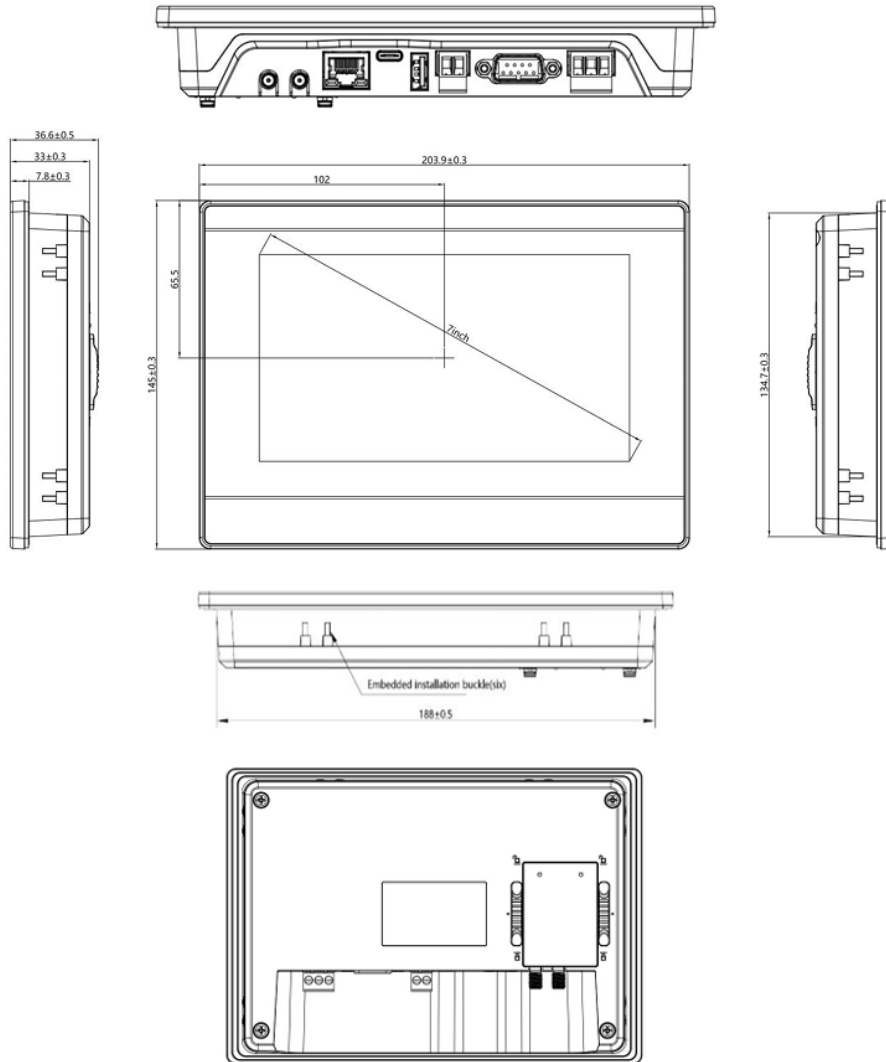


USB Type C	Slave: Used for downloading programs and debugging
	Master: Used for connecting U-disc and bar code scanner etc.

Ethernet Ports



RJ45	Used for setting Ethernet with controllers or used for connecting server.
------	---



Flush-mounted installation cutout dimensions: $190 \times 136 (+1.5mm/-0.0mm)$